

## **FANWAY MACHINERY MANUFACTURING CO.,LTD**

**Address:500 Meters North away Zhangzhai West Zhongyuan  
Road, Zhengzhou, China.**

**Tel: 86-371-65952989**

**E-mail:info@pellet-making-machine.com**

**Website: www.pellet-making-machine.com**

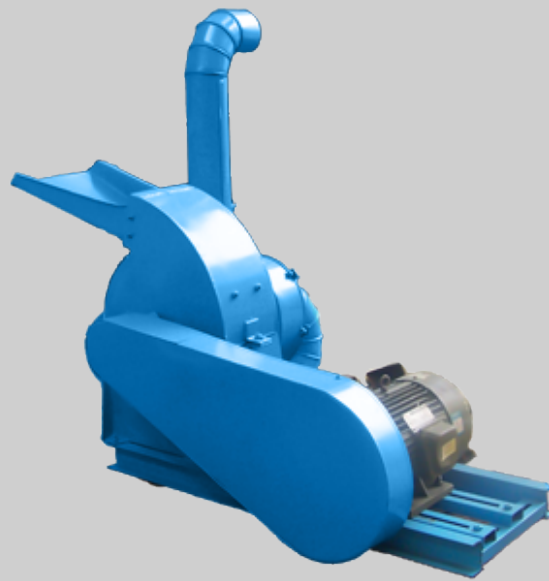
### **Electric Wood Hammer Mill**

Biomass material grinding process is an important step to make best quality wood pellets because some raw materials are not available for pellet mill directly, such as wood blocks, wood logs, grains as well as other large size woody materials. These kind of materials need to be crushed into sawdust firstly with electric crusher or hammer mill. This electric hammer mill is used to crush raw materials with diameter of less than 50mm, while wood crusher is suitable for wood materials with diameter of 50-200mm. Wood hammer mill crushes wood materials by the collision between the high speed hammer blades. The diameter of processed material can reach 3-5mm.

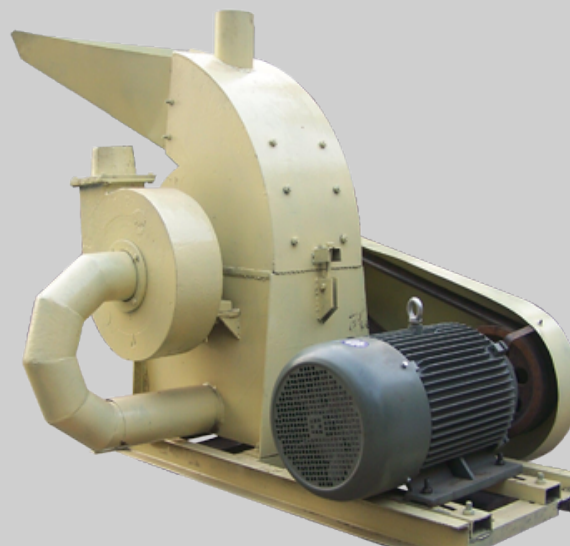
### **Electric Wood Hammer Mill Technical Data**

E-mail: [info@pellet-making-machine.com](mailto:info@pellet-making-machine.com) Tel:86-371-65952989

Model	Principal Axis Rotation Rate	Rotor Working Diameter	Hammer Quantity	Capacity(kg/h)	Power kw
FY360	4000 min/n	360 mm	16	150-250	5.5-7.5
FY400	4000 min/n	400 mm	16	250-500	7.5-11
FY500	4000 min/n	500 mm	24	500-700	11-15



FY360



FY500